

GEM[®]



ACCESSORY CATALOG



GEM® PASSENGER VEHICLES

Transport people around campuses, facilities or neighborhoods in distinctive comfort. The GEM's spacious interior, intuitive ergonomics and open-air design make getting in and out easy. All forward-facing seats and quiet operation increase safety and promote connectivity and conversation among passengers.



Aluminum Wheels - Page 16



S-Box - Page 26

THE PERFECT VEHICLE FOR:

- Student and Guest Transportation
- Valet and Customer Service
- Neighborhoods
- Police and Security Control
- Site and Campus Tours
- Families



Doors - Pages 17-19



GEM® UTILITY VEHICLES

With 1,400 lbs. of payload, count on GEM® to get the job done efficiently, economically and sustainably—with zero emissions and lower operating costs than a gas-powered van or truck. Choose from hundreds of options and accessories to create the customized vehicle you need to maximize productivity, indoors or out.



Ramped Tailgate - Page 30



Front & Side Tool Chests - Page 28

THE PERFECT VEHICLE FOR:

- Groundskeeping
- Facility Management
- Indoor Warehouse
- Housekeeping
- Hospitality
- Emergency Service



Boxside - Page 28



THE RIGHT SOLUTION

When it comes to moving people and cargo with ease and efficiency, the vehicle you choose matters. Make the smart choice with the all-new electric GEM®. Polaris® engineered for a premium ride and long-lasting durability, the new GEM® has more built-in comfort and street-legal safety features than a golf cart, and it's more maneuverable, cost-efficient and sustainable than a van or truck. It offers a more spacious interior with the same compact footprint and quiet, electric power for low-cost, low-maintenance operation.

Now with more versatile options, GEM® can be customized to your needs—so you can drive, shuttle, haul and work with confidence that you've chosen a vehicle built for what you do. Drive one today and discover why GEM® is **the smarter way to move.™**

GENUINE ENGINEERED ACCESSORIES



TABLE OF CONTENTS

POWER & CHARGING	8-10
GARAGE	11
CAB ACCESSORIES	12-15
WHEELS	16
ROOFS & DOORS	17-19
WINDSHIELDS & WINDOWS	20-21
BUMPERS & WINCHES	22-23
LIGHTS	24-25
PASSENGER CARRIERS	26-27
UTILITY CARRIERS	28-31



SOLAR

PART #: 2881506 \$2,999.99 US
FITMENT: e4 \$3,409.08 CAN

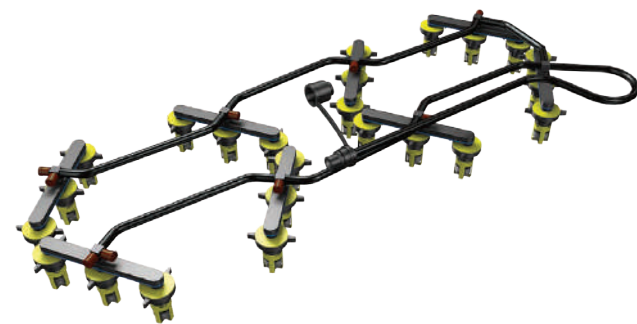
PART #: 2881507 \$3,799.99 US
FITMENT: e6, eL XD (with 2881663) \$4,318.17 CAN

Extend your time between charges and battery life with a renewable source of energy - the sun!

The solar panel is lightweight, non-glass high efficiency Mono Crystalline Solar which is hail and impact resistant

Specifically designed and programmed to work with and match the Polaris® 48V battery set systems

Does not work with: Lithium Ion



BATTERY WATERING KITS

PART #: 2881635 - 12V \$259.99 US
FITMENT: e2, e4 \$295.44 CAN

PART #: 2881636 - 6V \$259.99 US
FITMENT: e6, eL XD \$295.44 CAN

Filler works by replacing the battery's existing vent caps with valves that are interconnected with tubing, allowing the user to fill all cells of the battery from a single remote location

Each valve independently shuts off water flow to the cell when the proper electrolyte level is reached, allowing the batteries to be filled perfectly each time



BATTERY FILLER SYSTEM FOR GEM® eM™1400

PART #: 2880201 \$478.99 US
FITMENT: eM™1400, eM™1400 LSV \$570.99 CAN

Filler works by replacing the battery's existing vent caps with valves that are interconnected with tubing, allowing the user to fill all cells of the battery from a single remote location

Each valve independently shuts off water flow to the cell when the proper electrolyte level is reached, allowing the batteries to be filled perfectly every time



FAST CHARGER

PART #: 4015434 - 3kW \$3,360.00 US
FITMENT: e2, e4, e6, eL XD \$3,818.18 CAN

Charge your GEM® up to 6X faster than the standard 120 volt on-board charger. Order quantity of 1 for up to 3X faster charge, and order quantity of 2 for up to 6X faster charge

Required, sold separately: Charger Mounting Kit (PN 2881853)

CHARGER	3 kW	6 kW
Flooded	Yes	No
Maintenance Free	Yes	No
Distance Maintenance Free	Yes	No
Li-ion 8.9 kW	Yes	Yes
Li-ion 12.4 kW	Yes	Yes

J1772 3kW/6kW CHARGER MOUNTING KIT

PART #: 2881853 \$444.99 US
FITMENT: e2, e4, e6, eL XD \$556.24 CAN

This kit is required to install the fast charger options onto the vehicle

CHARGE PORT DOOR

RED PART #: 2882582-520 \$59.99 US
FITMENT: e2, e4, e6, eL XD \$83.99 CAN

WHITE PART #: 2882582-599 \$59.99 US
FITMENT: e2, e4, e6, eL XD \$83.99 CAN

BLUE PART #: 2882582-598 \$59.99 US
FITMENT: e2, e4, e6, eL XD \$83.99 CAN

BLACK PART #: 2882582-666 \$59.99 US
FITMENT: e2, e4, e6, eL XD \$83.99 CAN

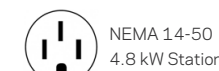
Improved port door now has curved edges for easier grip, and integrated hinges for sturdier door when charging. Works as a direct replacement for 2016 charge port doors.

BATTERIES

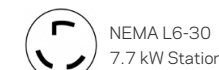
MAKE	PART #	FITMENT	DESCRIPTION	PRICE
Maintenance Free 12V AGM Battery	4015462	e2, e4	Maintenance free battery that never needs filling (leak-free, spill-proof)	\$499.99 US \$568.17 CAN
Distance Maintenance Free 6V AGM Battery	4015463	e2, e4, e6, eL XD	Extended range maintenance free battery that never needs filling (leak-free, spill-proof)	\$289.99 US \$329.53 CAN
12V Battery for use with Li-Ion options	4014770	e2, e4, e6, eL XD	12V battery for use with Li-Ion battery system to drive BMC	\$119.99 US \$145.99 CAN
8.9 kW Li-Ion Battery Pack - 44V	4015495	e2, e4, e6, eL XD	44V Li-Ion battery pack - part of 8.9 kW system providing extended range and longer life	\$8,200.00 US \$9,318.18 CAN
12.4 kW Li-Ion Battery Pack - 30V	4015532	e2, e4, e6, eL XD	30V Li-Ion battery pack - part of 12.4 kW system providing extended range and longer life	\$6,900.00 US \$7,840.91 CAN
12.4 kW Li-Ion Battery Pack - 15V	4015533	e2, e4, e6, eL XD	15V Li-Ion battery pack - part of 12.4 kW system providing extended range and longer life	\$3,700.00 US \$4,204.55 CAN
Li-Ion Battery Upfit Kit	2881852	e2, e4, e6, eL XD	Kit to upfit GEM® battery system to Li-Ion package (same kit for upfit to 8.9 or 12.4 system)	\$679.99 US \$772.72 CAN



Shown: 7.7 kW Charging Station



NEMA 14-50
4.8 kW Station



NEMA L6-30
7.7 kW Station

STATION CHARGERS

PART #: 2413421 - LCS-25P, 4.8 kW \$999.99 US
FITMENT: e2, e4, e6, eL XD \$1,136.35 CAN

PART #: 2413422 - HCS-40P, 7.7 kW \$1,199.99 US
FITMENT: e2, e4, e6, eL XD \$1,363.63 CAN

Hard wire a city infrastructure style charge at home or the office. Both use 240V power.

The 4.8 kW station has a 20 Amp circuit, and the 7.7 kW station has a 32 Amp circuit, making it charge faster.



RIDERX® DONGLE

PART #: 2879855 \$299.99 US
FITMENT: e2, e4, e6, eL XD \$340.90 CAN

Gain insight into your vehicle's range performance and track maintenance

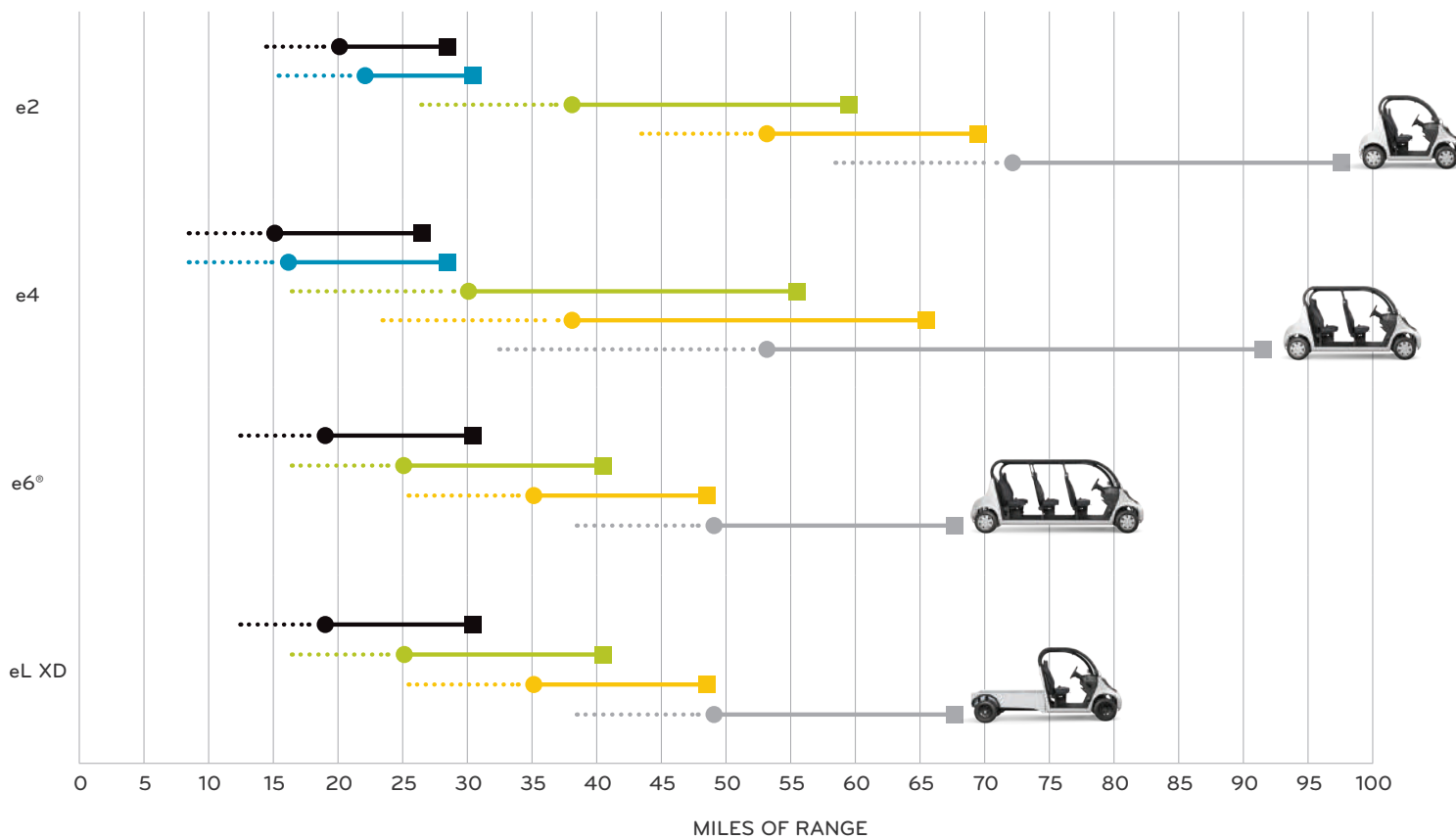


SMART POWER TO MOVE YOU

Whether you travel just a few miles or drive all day, Polaris® GEM® offers versatile battery and charging options to fit your range requirements and ensure your GEM® will always be ready to move when you need it.

CHOOSE THE BATTERY RIGHT FOR YOU

FLOODED ELECTROLYTE	MAINTENANCE FREE	DISTANCE MAINTENANCE FREE	LITHIUM-ION 8.9 kWh	LITHIUM-ION 12.4 kWh
Value battery requires regular maintenance	Leak-free, spill-proof design never needs refilling	For increased distance, especially in hilly terrain	Lightweight and hard-working for maximum range and 2-3X more battery life	Maximum range for shuttle and other high-demand applications



● Range on all Polaris® electric vehicles will vary depending on temperature, grade, payload and driving style. Average range value includes testing at 25 mph with 332 lbs. of cargo and a stop/start every 1,000 feet on a flat grade.
 ■ NEV values attained via testing in accordance with NEV America requirements with continuous use on a horizontal grade.



COVERS

PART #: 2687218 FITMENT: e2	\$249.99 US \$284.08 CAN
PART #: 2687219 FITMENT: e4	\$299.99 US \$340.90 CAN
PART #: 2687220 FITMENT: e6	\$349.99 US \$397.72 CAN
PART #: 2687221 FITMENT: eL XD	\$269.99 US \$306.81 CAN

Protects your vehicle in short or long term storage
 Water-resistant, washable, and designed not to scratch the finish of your vehicle
 Features a cinch strap to ensure a tight fit

BALLAST PLATE

PART #: 2882298 FITMENT: e2, e4, e6, eL XD	\$349.99 US \$399.99 CAN
---	-----------------------------

Adds weight to the front of GEM improving it's ability to get up steep hills

POLARIS POWER® PORTABLE GENERATORS



Polaris POWER® portable digital inverter generators are built for your outdoor needs and are tested to the same rigorous standards as every Polaris® product.



1000 WATT INVERTER GENERATOR
 Part # P13GDGANA \$549.99 US | \$599.99 CAN

2000 WATT INVERTER GENERATOR
 Part # P13GDGBNA \$799.99 US | \$899.99 CAN

3000 WATT INVERTER GENERATOR
 Part # P13GDGCNA \$1,599.99 US | \$1,799.99 CAN



PARALLEL KIT - CETL APPROVED
 Part # 3410281 \$149.99 US | \$169.99 CAN



COVER - P1000
 Part # 2686441
 \$29.99 US | \$34.99 CAN

COVER - P2000
 Part # 2686442
 \$34.99 US | \$39.99 CAN

COVER - P3000
 Part # 2686443
 \$39.99 US | \$44.99 CAN



GENERATOR OIL - quart
 Part # 2879383
 \$6.99 US | \$8.49 CAN



GRAY TWO-TONE SEATS

PART #: 2686216-317 **\$299.99 US**
FITMENT: e2, e4, e6, eL XD **\$399.99 CAN**

Enhance your GEM's style with two-toned seats

RUBBER FLOOR MATS

PART #: 5416119 - Front **\$59.99 US**
FITMENT: e2, e4, e6, eL XD **\$68.17 CAN**

PART #: 5416120 - Rear **\$49.99 US**
FITMENT: e4, e6 **\$56.81 CAN**

Protects your floors from scuff marks,
and provides added traction

CARPET FLOOR MATS

PART #: 2882555 **\$189.99 US**
FITMENT: e2, eL XD **\$215.90 CAN**

PART #: 2882556 **\$289.99 US**
FITMENT: e4 **\$329.53 CAN**

PART #: 2882557 **\$389.99 US**
FITMENT: e6 **\$443.17 CAN**

Plush carpeting made to protect your floors.
Includes mounting hardware



UNDERSEAT STORAGE

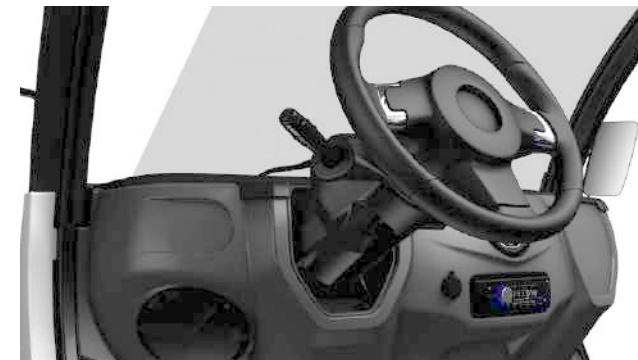
PART #: 2882505 **\$149.99 US**
FITMENT: e2, e4, e6, eL XD **\$179.99 CAN**

The NEW Underseat storage allows for minimal rear seat foot room impact, has 3 compartment design with a large central storage space and side load storage. It mounts to the seat via velcro, keeping it securely in place

LH ELECTRONIC POWER STEERING (EPS)

PART #: 2882508 **\$1,199.99 US**
FITMENT: e2, e4, e6, eL XD **\$1,363.63 CAN**

Steer with less effort
Electronic



LIGHTNING AUDIO STEREO

PART #: 2882314 **\$599.99 US**
FITMENT: e2, e4, e6, eL XD **\$681.81 CAN**

The Lightning Audio LA-1500BT Stereo features large 6.5" speakers with a built-in amplifier, AM/FM radio, Bluetooth wireless technology, app control for smartphones, USB port and front auxiliary input.

Face plate is detachable for added security

WINDSHIELD WASHER

PART #: 2881863 **\$171.99 US**
FITMENT: e2, e4, e6, eL XD **\$195.44 CAN**

Keep your windshield free from obstruction



HEATER

PART #: 2881865 **\$549.99 US**
FITMENT: e2, e4, e6, eL XD **\$624.99 CAN**

Provides fan and heat source to raise cab temperatures in electric vehicles

Easy installation, includes heater, fan, mounting hardware, blower ducts and wiring





CAB FRAME

PART #: 2880203 **\$499.99 US**
FITMENT: eM1400 **\$599.99 CAN**

Heavy duty steel cab frame allows you to add many cab components, like a roof, doors or windshield to your vehicle



WIPER KIT

PART #: 2880884 **\$299.99 US**
FITMENT: eM1400, eM1400 LSV **\$349.99 CAN**

Clear rain and debris from your windshield with the flick of a switch.

Easy installation, includes all hardware, wiring and switches

Required, sold separately: Windshield Kit (PN 2880885) when used on GEM® eM™1400 LSV or eM™1400, Windshield Kit (PN 2879958) when used on Polaris® M1400™



REVERSE WARNING KIT

PART #: 2876228 **\$49.99 US**
FITMENT: eM1400, eM1400 LSV **\$69.99 CAN**

While in reverse, a beep will sound alerting those around you that you are backing up



UNDER SEAT STORAGE TUB

PART #: 2880202 **\$79.99 US**
FITMENT: eM1400, eM1400 LSV **\$94.99 CAN**

Gain extra storage with this storage tub
Fits underneath the seat



HORN KIT

PART #: 2875048 **\$69.99 US**
FITMENT: eM1400, eM1400 LSV **\$79.99 CAN**

Installs in the console area
Connects to the vehicle's battery power supply



SIDE MIRROR KIT

PART #: 2882581 **\$149.99 US**
FITMENT: e2, e4, e6, eL XD **\$194.99 CAN**

Large, fully-adjustable mirror provides good visibility to the sides and rear of the vehicle, especially when in heavy traffic or tight parking areas.

*Direct replacement for 2016 standard factory side mirror.



SIDE MIRROR KIT — eM-LINE

PART #: 2881001 - Driver **\$79.99 US**
FITMENT: eM1400, eM1400 LSV **\$94.99 CAN**

PART #: 2881002 - Passenger **\$59.99 US**
FITMENT: eM1400, eM1400 LSV **\$69.99 CAN**

Large mirror provides good visibility to the sides and rear of the vehicle

Easy installation

Required, sold separately: Cab Frame (PN 2880203) when used on GEM® eM™1400, Mounting Kit (PN 2879111) when used on any vehicle with Poly Doors



TURN SIGNAL KIT

PART #: 2880882 **\$499.99 US**
FITMENT: eM1400 **\$568.17 CAN**

Includes front and rear turn signal lights, wiring and column mounted switch for operation



HEATER

PART #: 2880880 **\$999.99 US**
FITMENT: eM1400, eM1400 LSV **\$1,149.99 CAN**

Provides fan and heat source to raise cab temperatures in electric vehicles

Easy installation, includes heater, fan, mounting hardware, blower ducts and wiring



CUP HOLDER

PART #: 2881674 **\$24.99 US**
FITMENT: e2, e4, e6, eL XD **\$34.99 CAN**

Conveniently holds your beverages in the dash



ALUMINUM WHEELS (14 X 165)

PART #: 1522553 **\$359.99 US**
FITMENT: e2, e4, e6, eL XD **\$449.99 CAN**

Add styling to your GEM® with an aluminum rim
Tires offer a smooth ride
Rated for on-road driving
Sold individually: order quantity of 4 for complete set



FENDER FLARES

PART #: 2881673 **\$99.99 US**
FITMENT: eL XD **\$113.63 CAN**

Help protect your vehicle's side panels

BALLAST PLATE

PART #: 2882298 **\$349.99 US**
FITMENT: e2, e4, e6, eL XD **\$399.99 CAN**

Adds weight to the front of GEM improving it's ability to get up steep hills



LOCK & RIDE® POLY ROOF

PART #: 2879109 **\$299.99 US**
FITMENT: eM1400, eM1400 LSV **\$357.99 CAN**

Installs quickly and easily, without tools, using Lock & Ride® technology and provides a sealed fit
Provides outstanding overhead protection and shade to keep riders protected and comfortable
Lightweight, strong and durable polyethylene construction
Textured finish on polyethylene matches vehicle finish
Required, sold separately: Cab Frame Kit (PN 2880203) for use with GEM® eM™1400



LOCK & RIDE® POLY DOORS

PART #: 2879111 **\$1,299.99 US**
FITMENT: eM1400, eM1400 LSV **\$1,679.99 CAN**

Provides protection and comfort
Windows can be opened, and pivoted as desired for airflow and exterior access
Strong, durable structural web injection-molded shell
Profile tubing and plastic design create sealed perimeter
Lightweight, strong and durable polyethylene construction
Textured finish on polyethylene matches vehicle finish
Door is backed with sound-absorbing insulation material
Required, sold separately: Cab Frame Kit (PN 2880203) for use on GEM® eM™1400



CANVAS DOORS

PART #: 2879351 **\$599.99 US**
FITMENT: eM1400 **\$779.99 CAN**

Installs easily and provides protection and comfort
Features reliable latches and ventilation through the PVC windows with a magnetic closure
Durable, heavy-duty 23-oz. canvas material
Mold-resistant and UV-stable
Heavy-duty powder-coated steel rod door frames
Premium-quality paddle latches
Required, sold separately: Cab Frame Kit (PN 2880203) for use on GEM® eM™1400





FRONT FULL HARD DOOR

FITMENT: e2, e4, e6, eL XD

COLOR	PART #	PRICE
LH Black	2635825-666	\$749.99 US \$852.26 CAN
LH Red	2635825-520	\$749.99 US \$852.26 CAN
LH White	2635825-599	\$749.99 US \$852.26 CAN
LH Blue	2635825-598	\$749.99 US \$852.26 CAN
RH Black	2635826-666	\$749.99 US \$852.26 CAN
RH Red	2635826-520	\$749.99 US \$852.26 CAN
RH White	2635826-599	\$749.99 US \$852.26 CAN
RH Blue	2635826-598	\$749.99 US \$852.26 CAN



MIDDLE/REAR FULL HARD DOOR

FITMENT: e4, e6

COLOR	PART #	PRICE
LH Black	2635827-666	\$749.99 US \$852.26 CAN
LH Red	2635827-520	\$749.99 US \$852.26 CAN
LH White	2635827-599	\$749.99 US \$852.26 CAN
LH Blue	2635827-598	\$749.99 US \$852.26 CAN
RH Black	2635828-666	\$749.99 US \$852.26 CAN
RH Red	2635828-520	\$749.99 US \$852.26 CAN
RH White	2635828-599	\$749.99 US \$852.26 CAN
RH Blue	2635828-598	\$749.99 US \$852.26 CAN



HALF HARD DOOR

FITMENT: e2, e4, e6, eL XD

COLOR	PART #	PRICE
LH Black	2635867-666	\$449.99 US \$511.35 CAN
LH Red	2635867-520	\$449.99 US \$511.35 CAN
LH White	2635867-599	\$449.99 US \$511.35 CAN
LH Blue	2635867-598	\$449.99 US \$511.35 CAN
RH Black	2635868-666	\$449.99 US \$511.35 CAN
RH Red	2635868-520	\$449.99 US \$511.35 CAN
RH White	2635868-599	\$449.99 US \$511.35 CAN
RH Blue	2635868-598	\$449.99 US \$511.35 CAN



QUARTER HARD DOOR

FITMENT: e2, e4, e6, eL XD

COLOR	PART #	PRICE
LH Black	2635863-666	\$199.99 US \$227.26 CAN
LH Red	2635863-520	\$199.99 US \$227.26 CAN
LH White	2635863-599	\$199.99 US \$227.26 CAN
LH Blue	2635863-598	\$199.99 US \$227.26 CAN
RH Black	2635864-666	\$199.99 US \$227.26 CAN
RH Red	2635864-520	\$199.99 US \$227.26 CAN
RH White	2635864-599	\$199.99 US \$227.26 CAN
RH Blue	2635864-598	\$199.99 US \$227.26 CAN



SOFT CANVAS DOORS

PART #: 2881854
FITMENT: e2, eL XD
\$799.99 US
\$949.99 CAN

PART #: 2881855
FITMENT: e4
\$1,199.99 US
\$1,363.63 CAN

PART #: 2881856
FITMENT: e6
\$1,599.99 US
\$1,818.17 CAN

Features zip open and roll back for easy conversion from an enclosed cab to an open cab
Can be easily removed and re-assembled



REAR WINDOW

PART #: 5452161
FITMENT: e2, e4, e6, eL XD
\$229.99 US
\$261.35 CAN

Protect the interior from sun, wind and rain

Door Mounting Kits and Filler Kits required for all doors when ordered separately from vehicles. See local dealer for more information regarding these parts.





WINDSHIELDS & WINDOWS

Go to GEMCAR.COM
or visit your local dealer for more info.



CANVAS CAB POLY WINDSHIELD

PART #: 2879490 \$399.99 US
FITMENT: eM1400 \$519.99 CAN

- Installs quickly and easily, without tools, using Lock & Ride® technology
- Strong, durable polycarbonate construction
- Provides the best impact, scratch and chip resistance
- Full exterior gasket for sealed installation
- Radiused design for automotive fit, improved acoustics
- Required, sold separately: Cab Frame Kit (PN 2880203)



GLASS WINDSHIELD

PART #: 2880885 \$599.99 US
FITMENT: eM1400 \$699.99 CAN

- Shatterproof, scratch-resistant, optical-grade laminate safety glass offers the best rider protection and visibility
- Protects riders from wind, rain, vehicle spray and more
- Required, sold separately: Cab Frame Kit (PN 2880203)



LOCK & RIDE® HARD COAT POLY WINDSHIELD

PART #: 2879108 \$399.99 US
FITMENT: eM1400 \$519.99 CAN

- Installs quickly and easily, without tools, using Lock & Ride® technology
- Strong, durable polycarbonate construction
- Provides the best impact, scratch and chip resistance
- Full exterior gasket for sealed installation
- Radiused design for automotive fit, improved acoustics
- Required, sold separately: Cab Frame Kit (PN 2880203)



POLY REAR PANEL

PART #: 2879950 \$499.99 US
FITMENT: eM1400, eM1400 LSV \$649.99 CAN

- Installs quickly and easily, without tools, using Lock & Ride® technology
- Required, sold separately: Cab Frame Kit (PN 2880203) for use with GEM® eM™1400



CANVAS ROOF & REAR PANEL

PART #: 2879350 \$299.99 US
FITMENT: eM1400 \$357.99 CAN

- Easy to install or remove for lightweight overhead and rear protection as needed
- PVC rear window provides reliable protection and visibility
- Rear panel provides protection, prevents dust swirl
- Required, sold separately: Cab Frame Kit (PN 2880203) for use with GEM® eM™1400





FRONT RUGGED BUMPER

PART #: 2882457 \$349.99 US
FITMENT: e2, e4, e6, eL XD \$399.99 CAN

The rugged bumper adds extra front protection for heavy-duty work applications

Powder-coated steel

Does not work with: Front Chrome Bumper



FRONT CHROME BUMPER

PART #: 2882459 \$449.99 US
FITMENT: e2, e4, e6, eL XD \$562.49 CAN

Chrome finish

Protect your vehicle from scratches and dings

Does not work with: Front Rugged Bumper



STEP NERF BARS

PART #: 2877703-458 \$149.99 US
FITMENT: eM1400, eM1400LSV \$194.99 CAN

Protect the vehicle from impacts with rocks, stumps and debris

Provide a step when a rider is climbing into or out of the vehicle

Rugged tubular construction ensures long-term durability and reliability



POLARIS® 3500 LB. INTEGRATED WINCH

PART #: 2878784 \$449.99 US
FITMENT: eM1400, eM1400 LSV \$589.99 CAN

3,500 lbs. rated pull

50 feet of 7/32 inch high-strength steel cable

Sealed motor and gear train to ensure reliable operation in extreme conditions

Includes: mini-rocker corded switch, roller fairlead, hook and strap and all mounting hardware and installation wiring



REAR RUGGED BUMPER

PART #: 2882458 \$449.99 US
FITMENT: e2, e4, e6 \$529.99 CAN

Powder coated steel

Protect your vehicle from scratches and dings

Integrate 1 ¼ inch hitch

Does not work with: Rear Chrome Bumper



REAR CHROME BUMPER

PART #: 2882460 \$449.99 US
FITMENT: e2, e4, e6 \$562.49 CAN

Chrome finish

Protect your vehicle from scratches and dings

Does not work with: Rear Rugged Bumper



REAR BUMPER

PART #: 2880879 \$249.99 US
FITMENT: eM1400, eM1400 LSV \$299.99 CAN

Heavy steel construction provides protection for rear of vehicle





LIGHTS	PART #	FITMENT	DESCRIPTION	PRICE
Amber Security Light Bar	2412057	eM1400 eM1400 LSV	Easy to install light design by Code 3 Rotating light	\$475.00 US \$565.48 CAN



Blue Security Light Bar	2412058	eM1400 eM1400 LSV	Easy to install light design by Code 3 Rotating light	\$475.00 US \$565.48 CAN
-------------------------	---------	----------------------	--	-----------------------------



Red Security Light Bar	2412059	eM1400 eM1400 LSV	Easy to install light design by Code 3 Rotating light	\$475.00 US \$565.48 CAN
------------------------	---------	----------------------	--	-----------------------------



Amber LED Light Bar	2412060	eM1400 eM1400 LSV	Clear lens with amber colored LEDs Low profile for a stealth look Draws 50-75% less amps than a standard mechanical security light bar	\$1,340.99 US \$1,595.99 CAN
---------------------	---------	----------------------	--	---------------------------------



Blue LED Light Bar	2412061	eM1400 eM1400 LSV	Clear lens with blue LEDs Low profile for a stealth look Draws 50-75% less amps than a standard mechanical security light bar	\$1,399.99 US \$1,666.99 CAN
--------------------	---------	----------------------	---	---------------------------------



Red LED Light Bar	2412062	eM1400 eM1400 LSV	Clear lens with red LEDs Low profile for a stealth look Draws 50-75% less amps than a standard mechanical security light bar	\$1,952.99 US \$2,324.99 CAN
-------------------	---------	----------------------	--	---------------------------------



Blue/Red LED Light Bar	2412063	eM1400 eM1400 LSV	Clear lens with blue/red LEDs Low profile for a stealth look Draws 50-75% less amps than a standard mechanical security light bar	\$1,337.99 US \$1,591.99 CAN
------------------------	---------	----------------------	---	---------------------------------



27" DUAL ROW LIGHT BAR

PART #: 2879858 \$1,499.99 US
FITMENT: eM1400, eM1400 LSV \$1,699.99 CAN

Lights produce a total of 21,260 lumens of illumination
Side flood lenses provide a wide lighting periphery for optimized visibility

Required, sold separately: Wire Harness (PN 2879863), Cab Frame (PN 2880203) and Poly Roof Kit (PN 2879109)



12" LIGHT BAR

PART #: 2879500 \$349.99 US
FITMENT: eM1400, eM1400 LSV \$399.99 CAN

9.5-watt LEDs produce 2,100 lumens of illumination with a low electrical draw

Required, sold separately: Wire Harness (PN 2879863)



LED HEADLIGHTS

PART #: 2413083 \$379.99 US
FITMENT: e2, e4, e6, eL XD \$431.81 CAN

Provides brighter light for added safety

REVERSE LIGHT KIT

PART #: 2413085 \$124.99 US
FITMENT: MY16 & MY17 e2, e4, e6, eL XD \$159.99 CAN

Reverse lights give added safety so those around you know when your backing up



BEACON LIGHT

PART #: 2880912 \$179.99 US
FITMENT: eM1400, eM1400 LSV \$214.99 CAN

Great for industrial applications

Amber colored roof mounted beacon light adds visibility to the vehicle for safer operation

All wiring and hardware is included

Required, sold separately: Poly Roof Kit (PN 2879109)



LED BEACON LIGHT

PART #: 2881802 \$179.99 US
FITMENT: e2, e4, e6, eL XD \$204.53 CAN

Great for industrial applications

Amber colored roof mounted beacon light adds visibility for safer operation

Does not work with: Light Bar



LED LIGHT BAR

PART #: 2881803 \$699.99 US
FITMENT: e2, e4, e6, eL XD \$795.44 CAN

Great for industrial applications

Amber colored roof mounted bar light adds visibility for safer operation

Does not work with: Beacon Light



PASSENGER CARRIERS

Go to GEMCAR.COM or visit your local dealer for more info.



S-BED

PART #: 2882431 **\$799.99 US**
FITMENT: e2, e4, e6 **\$1,034.72 CAN**

Easily convert the back of your GEM® to carry more cargo. This bed allows for up to 330 pounds of payload when installed. It is 32.5x42.5 inches, made of space age material and has 4 D-rings to help secure your cargo.



S-BED SOLID SIDES

PART #: 2882432 **\$699.99 US**
FITMENT: e2, e4, e6 **\$899.99 CAN**

Durable support for hauling and transporting larger, bulky loads. Solid sides help eliminate cargo from falling out. S-box sides are made of aluminum with spring loaded latch for the hinged tailgate to make it easy to load and unload. Required, sold separately: S-Bed (PN 5262121) Does not work with: Trunk Back and Linkback



LINKBACK

PART #: 2881634 **\$799.99 US**
FITMENT: e2, e4, e6 **\$909.08 CAN**

Carries two golf bags
Does not work with: S-Bed, S-Bed Solid Sides, Trunkback, Rear Rugged Bumper and Rear Chrome Bumper



TRUNK BACK

PART #: 2881504 **\$799.99 US**
FITMENT: e2, e4, e6 **\$949.99 CAN**

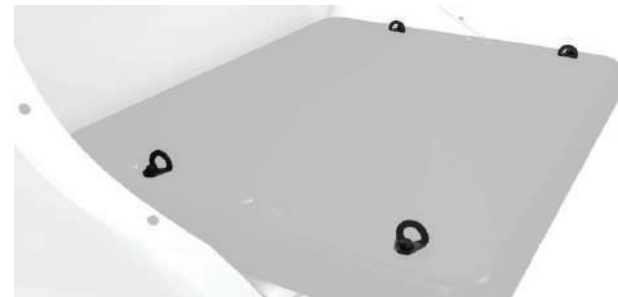
Lockable and removable design that is easy to install and remove
Perfect for groceries or other small cargo
Measures 33" x 16" x 15"
100 lb. carrying capacity
Does not work with: S-Bed, Solid Sides and Linkback



S-BOX

PART #: COMING SOON **\$1,349.99 US**
FITMENT: e2, e4, e6 **\$1,739.99 CAN**

Lockable, weather-tight, enclosed cargo carrier is perfect for transporting food and cargo, supplies or tools
Features hinged supported door and high-quality lockable door latch
Large, 23 cu ft storage capacity
Dimensions 28" x 38" x 38"
Does not work with trunkback or linkback.
Requires S-bed and Solid Sides.



TIE DOWNS

PART #: 2881781 **\$79.99 US**
FITMENT: e2, e4, e6 **\$90.90 CAN**

Help secure your cargo with these easy to install tie downs
Required, sold separately: S-Bed (PN 5262121)
Does not work with: Trunk Back and Linkback

REAR CARGO NET

PART #: 2881915 **\$119.99 US**
FITMENT: e2, e4, e6 **\$155.99 CAN**

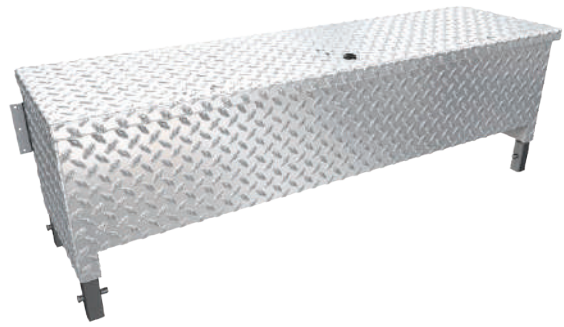
Helps secure your load.
Designed to be used with passenger carriers, such as S-bed and S-bed Solid Sides.





UTILITY CARRIERS

Go to GEMCAR.COM
or visit your local dealer for more info.



FRONT TOOL CHEST

PART #: 2881632 \$799.99 US
FITMENT: eL XD, eM1400, eM1400 LSV \$909.08 CAN

Keep tools and equipment in a convenient location
Lockable for added security
Measures 47.25" x 20" x 19.5" and has a 200 lb. carrying capacity
Does not work with: Front Panel



SIDE TOOL CHEST

PART #: 2881633 \$899.99 US
FITMENT: eL XD \$1,022.72 CAN

Fits the length of the flat bed and allows an open space in between for items that won't fit inside the boxes
Lockable for added security
Does not work with: Boxside and L-Box



FRONT PANEL

PART #: 2881778 \$249.99 US
FITMENT: eL XD \$284.08 CAN

Used with solid sides without Front Tool Chest
Durable support for hauling and transporting larger, bulky loads
Protects cabin from loads in box
Required, sold separately: Boxsides (PN 2881777)
Does not work with: L-Box and Side Tool Chest



STAKEBACK

PART #: 2881682 \$999.99 US
FITMENT: eL XD \$1,136.35 CAN

Durable support for hauling and transporting larger, bulky loads
Easy to remove sides for oversized loads



BOXSIDE

PART #: 2881777 \$1,499.99 US
FITMENT: eL XD \$1,704.53 CAN

Durable support for hauling and transporting larger, bulky loads
Easy to remove sides for oversized loads
Solid sides help eliminate cargo from falling out
Hinged for easy access
Required, sold separately: Front Panel (PN 2881778), or Front Toolbox (PN 2881632) with Boxside Toolbox Adapter (PN 2881780) for mounting
Does not work with: L-Box



LADDER RACK

PART #: 2881663 \$999.99 US
FITMENT: eL XD \$1,136.35 CAN

Ideal for transporting long items such as ladders, pipe, lumber or other building and maintenance supplies
Rated for up to 75 lbs. of cargo
Can be installed with Bed Sides or Toolboxes
Does not work with: L-Box



eL XD BED TIE DOWNS

PART #: 2881722 \$69.99 US
FITMENT: eL XD, eM1400, eM1400 LSV \$79.53 CAN

Help secure your cargo with these easy to install stainless tie down brackets



L-BOX

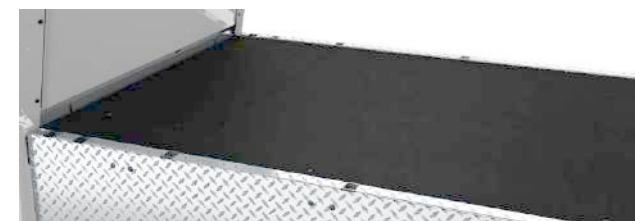
PART #: COMING SOON \$4,199.99 US
FITMENT: eL XD \$5,419.99 CAN

Features a 44 inch cab high canopy box, lined rear door and full length side door for easy access to cargo
Made of aluminum with an enamel white finish
Does not work with: Boxside, Ladder Rack, Front Tool Chest, Side Tool Chest and Front Panel

BOXSIDE TOOLBOX ADAPTER

PART #: 2881780 \$49.99 US
FITMENT: eL XD \$56.81 CAN

Used to adapt the front toolbox to mount solid sides



RECESSED BED COVER

PART #: 2881681 \$599.99 US
FITMENT: eL XD \$681.81 CAN

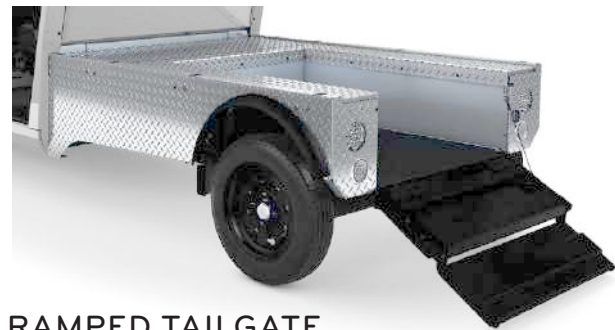
These panels create a flat bed on the eL XD for hauling



HINGED TAILGATE

PART #: 2881869 \$849.99 US
FITMENT: eL XD \$965.90 CAN

Hinged tailgate drops down for easy loading/unloading of cargo



RAMPED TAILGATE

PART #: 2881870 \$949.99 US
FITMENT: eL XD \$1,079.53 CAN

Roll heavy cargo on and off your GEM®



LOCK & RIDE® CHAINSAW MOUNT

PART #: 2879354 \$129.99 US
FITMENT: eM1400, eM1400 LSV \$169.99 CAN

Installs quickly and easily, without tools, using Lock & Ride® technology

Can be secured to the outside of the bed wall, so your chainsaw is within reach at all times allowing you to maximize the bed space for other cargo

Required, sold separately: Bed Sides (PN 2880070)



MANUAL BOX LIFT

PART #: 2880418 \$199.99 US
FITMENT: eM1400, eM1400 LSV \$249.99 CAN

Manual latch to release bed tilt and hydraulic shock to hold bed in dump position

All mounts are integrated into the chassis for easy installation
Includes all hardware



ELECTRIC BOX LIFT

PART #: 2880145 \$1,054.99 US
FITMENT: eM1400, eM1400 LSV \$1,255.99 CAN

Heavy-duty actuator raises/lowers cargo box

All mounts are integrated into the chassis for easy installation

Dump dirt, sand or mulch with the flip of a switch

Includes all hardware and a dash-mounted switch



REMOVABLE LOCK & WORK™ BED SIDES

PART #: 2880070 \$499.99 US
FITMENT: eM1400, eM1400 LSV \$599.99 CAN

Contain your cargo with solid 12 inch tall sides and a removable rear panel.

Easily removed and installed using Lock & Work™ Technology



LOCK & WORK™ MAX BOX STANDARD DOOR

PART #: 2880144 \$3,299.99 US
FITMENT: eM1400, eM1400 LSV \$3,928.99 CAN

Easily removed and installed using Lock & Work™ Technology

Fully enclosed storage box keeps cargo and gear secure and dry

Dimensions 54" x 42" x 42"

Cannot be used with: Poly Roof (PN 2579950)



LOCK & RIDE® CARGO BOX

PART #: 2879230 \$329.99 US
FITMENT: eM1400, eM1400 LSV \$425.99 CAN

Keeps your tools safe and secure

Installs quickly and easily, without tools, using Lock & Ride® technology

Oversized hinged lid provides full, easy access to cargo

Durable Polyethylene Construction

Required, sold separately: Bed Sides (PN 2880070) or Box Sides (PN 2634373)



60 GALLON BOOMLESS UTILITY SPRAYER

PART #: 2879799 \$899.99 US
FITMENT: eM1400, eM1400 LSV \$1,169.99 CAN

Features a 60-gallon corrosion-resistant polyethylene tank, 12-volt diaphragm pump, and a pressure gauge with adjustable spray pressure

Delivers fluids at a rate of up to 3.8 gpm with a 45 psi maximum

Deluxe pistol grip handgun with an adjustable nozzle and 25 foot hose

Spray gun horizontal throw is 35 feet, with a maximum vertical throw of 26 feet

Boomless nozzles can deliver across a full 30 foot spray coverage area

Material: Polyethylene tank

Required, sold separately: Bed Sides (PN 2880070)



Polaris® LSVs comply with the NHTSA Low Speed Vehicles rules and regulations and can be operated on many streets with posted speed limits of 35 mph or less. Check local laws regarding street use and vehicle equipment requirements. Drivers must be at least 16 years old with a valid driver's license. Driver and passengers should always wear seat belts. Where appropriate for work and riding conditions, helmets and eye protection should also be worn. Never engage in stunt driving, and avoid excessive speeds and sharp turns. Range on all Polaris® electric vehicles will vary depending on temperature, grade, payload, and driving style. All pricing, specifications, claims, and information contained in this brochure are based on information available at the time of publication. Polaris® assumes no responsibility for any inaccuracies, opinions, or omissions in those publications. All pricing, specifications, and descriptions are subject to change without notice, and Polaris® assumes no responsibility for changes in pricing or specifications. Unless otherwise noted, all trademarks are the property of Polaris Industries Inc.

©2016 Polaris Industries Inc.
Part No. 9930198

GEMcar.com | 1-855-RIDE-GEM

