



2015 ACCESSORY CATALOG





PASSENGER VEHICLES

Transport up to 6 people in car-like comfort with street legal, zero-emission electric vehicles that can be customized for almost every application.



HARD DOOR KIT, COUPE - Page 18



TRUNKBACK™ - Page 31



CLIP-IN STAKE-BACK™ - Page 30



UTILITY VEHICLES

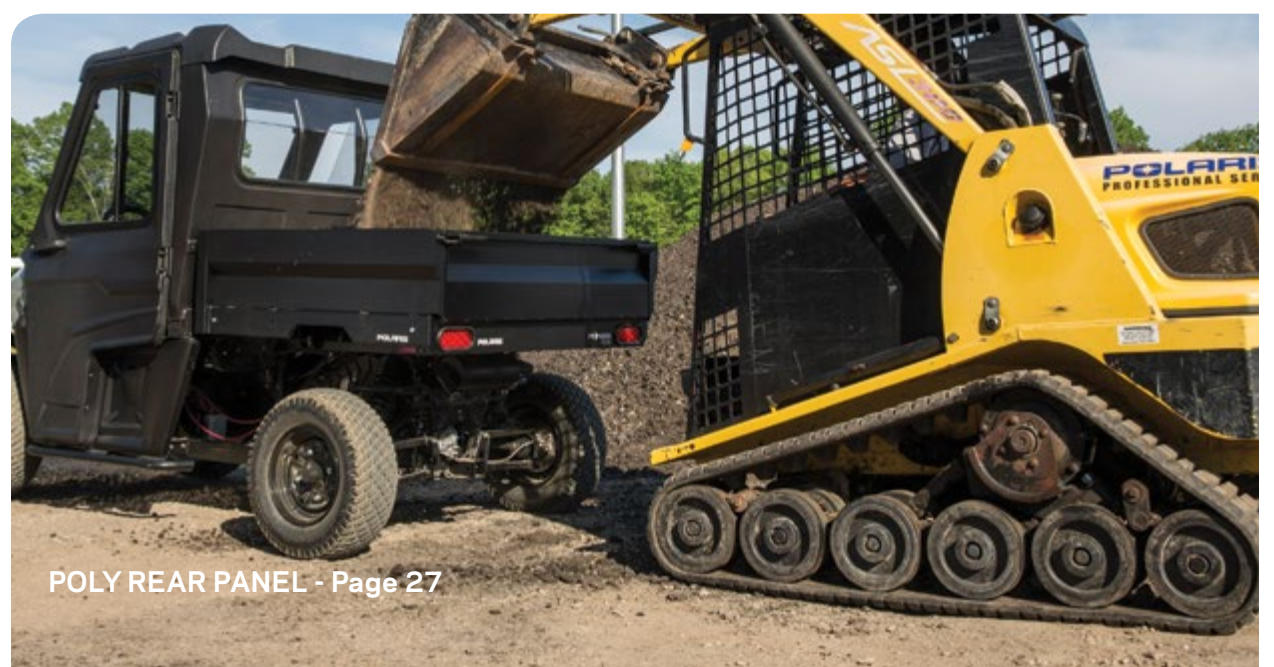
Haul up to 1,450lbs of payload with GEM® electric and Polaris® gas utility vehicles that can be customized to fit your specific needs.



LOCK & WORK™ BED SIDES - Page 31



STAKE-BACK™ KIT - Page 30



POLY REAR PANEL - Page 27



THE RIGHT SOLUTION.

Make your transportation the right solution with Genuine engineered GEM® Accessories. They are designed to look right, fit flawlessly and are tested beyond the life of your vehicle. Whether transporting passengers, moving cargo or performing essential tasks, GEM® premium electric vehicles set the standard.

Backed by 60 years of Polaris® performance and innovation, GEM® delivers an unmatched user experience that you can count on.

GENUINE ENGINEERED ACCESSORIES



TABLE OF CONTENTS

- POWER & CHARGING 8
- WHEELS & TIRES 9
- MAX BOX 10-11
- CAB ACCESSORIES 12-15
- DOORS 16-18
- WINDSHIELDS 19
- STORAGE 20-21
- FANS & CAB HEATERS 21
- BUMPERS 22-23
- LIGHTS & SAFETY 24-26
- REAR WINDOW 27
- GUARDS & MATS 28
- ROOFS 29
- CARRIERS 30-31
- WINCH & HITCH 32
- COVERS 33
- GARAGE 34



SOLAR PANEL



220 WATT SOLAR PANEL
Part # 2880185 - fits e4, e4s

\$2,499.99 US
\$2,499.99 CAN

Ladder Rack PN 2634799

410 WATT SOLAR PANEL
Part # 2880186 - fits e6°, e6°S

\$3,999.99 US
\$3,999.99 CAN

410 WATT SOLAR PANEL
Part # 2880184 - fits eL, eL XD

\$3,799.99 US
\$4,629.99 CAN



- Extend your time between charges and battery life with a renewable source of energy - the sun!
- The solar panel is lightweight
- Non-glass high efficiency Mono Crystalline Solar which is hail and impact resistant
- Specifically designed and programmed to work with and match the Polaris® 72V battery set systems

BATTERY FILLER SYSTEM FOR GEM® eM™1400



Part # 2880201

\$478.99 US
\$570.99 CAN

- Filler works by replacing the battery's existing vent caps with valves that are interconnected with tubing, allowing the user to fill all cells of the battery from a single remote location
- Each valve independently shuts off water flow to the cell when the proper electrolyte level is reached, allowing the batteries to be filled perfectly every time

FITMENT: eM™1400, eM™1400 LSV

10" CHROME WHEEL & TIRE ASSEMBLY



Part # 1521817

\$203.99 US
\$242.99 CAN

FITMENT: e2, eS ('98-'04)

- Add styling to your tires with a chrome wheel cover

12" CHROME WHEEL & TURF TIRE



Part # 1521808

\$279.99 US
\$329.99 CAN

FITMENT: e2, e4, e6°, e4S, e6°S, eL, eL XD, eS

- Tires offer a smooth ride
- Rated for driving "on" and "off" road
- Same height as the standard 12" inch tires
- Accepted on most golf courses
- Sold individually. Order quantity of 4 for complete set

12" ALUMINUM WHEEL & TURF TIRE



Part # 1521809

\$219.99 US
\$259.99 CAN

FITMENT: e2, e4, e6°, e4S, e6°S, eL, eL XD, eS

- Tires offer a smooth ride
- Rated for driving "on" and "off" road
- Same height as the standard 12" inch tires
- Accepted on most golf courses
- Sold individually. Order quantity of 4 for complete set

MUD FLAPS



Part # 2634297 - fits e2, e4, e6°, e4S, e6°S, eL, eL XD, eS

\$76.99 US
\$91.99 CAN

Part # 2634299 - fits e2, eS

\$142.99 US
\$170.99 CAN

Part # 2634300 - fits e2, e4, e6°, e4S, e6°S, eL, eL XD, eS

\$84.99 US
\$99.99 CAN

- Protects vehicle and cargo from flying dirt and mud
- Set of 2





MAX BOX STANDARD ROLL UP DOOR

Part # 2634440



\$5,325.00 US
\$6,339.29 CAN

FITMENT: eL, eL XD

- Features 44" Cab High Canopy Box, Lined Double Rear Cargo Doors w/Windows, Solid Front Window, Roll Up Side Doors (2) and Third Brake Light

MAX BOX FULL SHELF & HALF DIVIDER

Part # 2634442



\$239.99 US
\$279.99 CAN

FITMENT: eL, eL XD

- Keep your full length tool box organized
- Adjustable shelf widths to accommodate your needs
- Required, Sold Separately: Full Length Tool Box (PN 2634392)

MAX BOX FULL LENGTH TOOL BOX - LEFT & RIGHT SIDE

Part # 2634441L - left side



\$429.99 US
\$499.99 CAN

Part # 2634441R - right side

\$764.99 US
\$909.99 CAN

FITMENT: eL, eL XD

- Full length tool box to keep max box organized
- Mounts on the left side bed

MAX BOX STANDARD CARGO DOOR

Part # 2634439



\$3,399.35 US
\$4,049.99 CAN

FITMENT: eL, eL XD

- Features a 44" Cab High Canopy Box, Lined Double Rear Cargo Doors/Windows, Solid Front Window, Full Length Side Doors w/Windows (2) and Third Brake Light

LOCK & WORK™ MAX BOX STANDARD DOOR

Part # 2880144



\$3,299.99 US
\$3,928.99 CAN

FITMENT: eM1400, eM1400 LSV, M1400

- Easily removed and installed using Lock & Work™ Technology
- Fully enclosed storage box keeps cargo and gear secure and dry
- Dimensions 54"x42"x42"
- Cannot be used with PN 2579950 Poly Roof

MAX BOX HALF SHELF & HALF DIVIDER

Part # 2634445

FITMENT: eL, eL XD

\$257.99 US
\$306.99 CAN

- Keep your full length tool box organized.
- Adjustable shelf widths to accommodate to your needs.
- Required, sold separately: Full Length Tool Box

MAX BOX OVERHEAD RACK

Part # 2634444



\$899.99 US
\$1,049.99 CAN

FITMENT: eL, eL XD

- Perfect for hauling ladders or other supplies too long to fit inside the Max Box

MAX BOX EXTRA SHELF

Part # 5439403

FITMENT: eL, eL XD

\$155.99 US
\$185.99 CAN

- Add an extra shelf in the Max Box for added storage space





SPEED KEY KIT



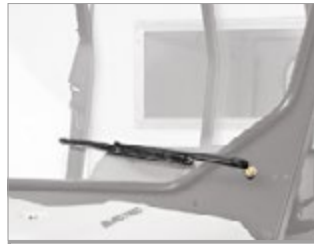
Part # 2881000

\$339.99 US
\$339.99 CAN

FITMENT: M1400

- Yellow Speed key governs vehicle speed to 10 or 15 mph maximum
- Owner can control the top speed available to individual operators
- Requires controller programming, available from any GEM® dealer

WIPER KIT



Part #2880884

\$299.99 US
\$349.99 CAN

FITMENT: eM1400LSV, eM1400 (Requires Windshield Kit PN 2880885), M1400 (Requires Windshield Kit PN 2879958)

- Clear rain and debris from your windshield with the flick of a switch.
- Easy installation, includes all hardware, wiring and switches

SIDE MIRROR KIT



Part # 2881001 - Driver

\$79.99 US
\$94.99 CAN

Part # 2881002 - Passenger

\$59.99 US
\$69.99 CAN

FITMENT: eM1400, eM1400 LSV, M1400

- Large mirror provides good visibility to the sides and rear of the vehicle
- Easy installation
- Required, Sold Separately: Cab Frame when used on GEM® eM1400 (PN 2880203)
- Required, Sold Separately: Mounting Kit when used on any vehicle with Poly Doors (PN 2879111)

PANORAMIC REAR VIEW MIRROR



Part # 2634611

\$29.99 US
\$35.99 CAN

FITMENT: e2, e4, e6, e4S, e6S, eL, eL XD, eS

- Provides a wide panoramic view of rear surroundings for increased visibility and safer driving
- Clamps to the existing interior rear-view mirror

TURN SIGNAL KIT



Part # 2880882

\$499.99 US
\$459.99 CAN

FITMENT: eM1400, M1400

- Includes front and rear turn signal lights, wiring and column mounted switch for operation.

UNDER SEAT STORAGE TUB



Part # 2880202

\$79.99 US
\$94.99 CAN

FITMENT: eM1400, eM1400 LSV

- Gain extra storage with this storage tub
- Fits underneath the seat

4 SPOKE STEERING WHEEL



Part # 1823940

\$119.99 US
\$132.99 CAN

FITMENT: e2, e4, e6, e4S, e6S, eL, eL XD, eS

- Replace stock Steering Wheel
- Includes a Polaris® GEM® emblem cover & center

SCORE CARD HOLDER



Part # 1823952

\$29.00 US
\$34.52 CAN

FITMENT: e2, e4, e6, e4S, e6S, eL, eL XD, eS

- Conveniently secures a golf score card, or other notes, on the steering wheel
- Replaces standard steering wheel cover
- Fits 3-spoke steering wheel only

DIFFERENTIAL LOCK



Part # 2880914

\$99.99 US
\$119.99 CAN

FITMENT: M1400

- Easy to install, allows locking of rear differential for increased traction on slippery surfaces
- Kit includes wiring and dash mounted selector switch

ACCESSORY PLUG



Part # 2412021

\$42.99 US
\$51.99 CAN

FITMENT: e2, e4, e6, e4S, e6S, eL, eL XD, eS

- 10 amp output
- Optional power supply for 12 volt accessories like small fans, mobile phones, small inverters





GRAB HANDLE KIT



Part # 2634496

\$74.99 US
\$89.99 CAN

FITMENT: e2, e4, e6, e4S, e6S, eL, eL XD, eS

- Grab handles can be added at each seat position to assist you in entering and exiting GEM® car

STEREO CONSOLE



Part # 5439476

\$165.00 US
\$196.43 CAN

FITMENT: e2, e4, e6, e4S, e6S, eL, eL XD, eS

- Custom designed for your GEM® car, this overhead console will accept most car stereos for "do it yourself" projects

GCFI CHARGING CORD



Part # 2411976

\$79.99 US
\$94.99 CAN

FITMENT: e2, e4, e6, e4S, e6S, eL, eL XD, eS, eM1400, eM1400 LSV

- 14 gauge, 25' GFCI extension cord
- Equipped with a GFCI protector to ensure you are using the right cord for your GEM® car.

HORN KIT



Part # 2875048

\$69.99 US
\$79.99 CAN

FITMENT: eM1400, eM1400 LSV, M 1400

- Installs in the console area
- Connects to the vehicle's battery power supply

OVERHEAD STEREO SYSTEM



Part # 2412019

\$725.00 US
\$863.10 CAN

FITMENT: e2, e4, e6, e4S, e6S, eL, eL XD, eS

- Features large 6" speakers, AM/FM radio, CD player with CD, CD-R, CD-RW capabilities and 3.5mm Front Panel Auxiliary Input
- Face plate is detachable for added security

PA SYSTEM



Part # 2412032

\$2,499.99 US
\$2,949.99 CAN

FITMENT: e2, e4, e6, e4S, e6S, eL, eL XD, eS

- Features a four-tone siren, adjustable volume control, and a powerful 58-volt amplifier
- Mounts on dashboard

LOCK & RIDE® CHAINSAW MOUNT



Part # 2879354

\$129.99 US
\$154.99 CAN

FITMENT: eM1400, eM1400 LSV, M1400

- Installs quickly and easily, without tools, using Lock & Ride® technology
- Can be secured to the outside of the bed wall, so your chainsaw is within reach at all times allowing you to maximize the bed space for other cargo
- Required, Sold Separately: Bed Sides (PN 2880070)

CAB FRAME



Part # 2880203

\$499.99 US
\$599.99 CAN

FITMENT: eM1400

- Heavy duty steel cab frame allows you to add many cab components, like a roof, doors or windshield, to your vehicle

60 GALLON BOOMLESS UTILITY SPRAYER



Part # 2879799

\$899.99 US
\$1,029.99 CAN

FITMENT: eM1400, eM1400 LSV, M1400

- Features a 60-gallon corrosion-resistant polyethylene tank, 12-volt diaphragm pump, and a pressure gauge with adjustable spray pressure
- Delivers fluids at a rate of up to 3.8gpm with a 45 psi maximum
- Deluxe pistol grip handgun with an adjustable nozzle and 25' hose
- Spray gun horizontal throw is 35', with a maximum vertical throw of 26'
- Boomless nozzles can deliver across a full 30-foot spray coverage area
- Material: Polyethylene tank
- Required, Sold Separately: Bed sides (PN 2880070)





2 PASSENGER GRAY FRAMED CANVAS DOORS

Part # 2634429-614



\$1,456.99 US
\$1,733.99 CAN

FITMENT: eL, eL XD, eS, e2

- Opens on a hinge from a functional door handle and latch system
- Features a zip-open window and is fully removable for an open cab feel
- Made with Sunbrella® canvas

4 PASSENGER GRAY FRAMED CANVAS DOORS

Part # 2634430-614



\$1,891.99 US
\$2,251.99 CAN

FITMENT: e4, e4S

- Durable, aluminum framed doors
- Doors easily open on a hinge from functional door handle & latch system
- Feature a zip open window & fully removable for an open cab feel
- Made with Sunbrella® Canvas

2 PASSENGER GRAY SOFT WEATHER ENCLOSURE

Part # 2634431-614



\$996.99 US
\$1,186.99 CAN

FITMENT: e2, eL, eL XD, eS

- Features zip open and roll back for easy conversion from an enclosed cab to an open cab, can be completely zipped off
- Made from Sunbrella® canvas

4 PASSENGER GRAY SOFT WEATHER ENCLOSURE

Part # 2634432-614



\$1,099.99 US
\$1,308.99 CAN

FITMENT: e4, e4S

- Features zip open and roll back windows & doors for easy conversion from an enclosed cab to an open cab, can be completely zipped off
- Made from Sunbrella® canvas

6 PASSENGER GRAY FRAMED CANVAS DOORS

Part # 2634840-614



\$2,641.99 US
\$3,144.99 CAN

FITMENT: e6, e6S

- Features zip open and roll back windows & doors for easy conversion from an enclosed cab to an open cab, can be completely zipped off
- Made from Sunbrella® canvas

6 PASSENGER GRAY SOFT WEATHER ENCLOSURE

Part # 2634839-614



\$1,735.99 US
\$2,065.99 CAN

FITMENT: e6, e6S

- Durable, aluminum framed doors
- Provides protection from the elements
- Opens on a hinge from a functional door handle and latch system
- Made with Sunbrella® Canvas
- Features a zip open window and are fully removable for an open cab feel

CANVAS DOORS

Part # 2879351



\$599.99 US
\$714.99 CAN

FITMENT: M1400, eM1400

- Installs easily and provides protection and comfort
- Features reliable latches and ventilation through the PVC windows with a magnetic closure
- Durable, heavy-duty 23-oz. canvas material
- Mold-resistant and UV-stable
- Heavy-duty powder-coated steel rod door frames
- Premium-quality paddle latches
- Required, Sold Separately: Cab Frame Kit (PN 28802023) for use on GEM® eM™ 1400





HARD DOOR KIT



Part # 2880424

\$5,499.99 US
\$5,899.99 CAN

FITMENT: e4 (13-Current), e4S

- White, light weight yet tough and versatile hard doors protect the cab area for safety & protection from elements
- Made of ABS plastic, features sliding window and lockable door handle
- Doors can be easily removed from the vehicle for an open cab feel

HARD DOOR KIT



Part # 2880332

\$2,799.99 US
\$3,339.99 CAN

FITMENT: e2, e2S, eL, eL XD (13-Current)

- White, light weight yet tough and versatile hard doors protect the cab area
- Made of ABS plastic, features sliding window and lockable door handle
- Doors can be easily removed from the vehicle for an open cab feel

LOCK & RIDE® POLY DOORS



Part # 2879111

\$1,299.99 US
\$1,547.99 CAN

FITMENT: eM1400 LSV, M1400, eM1400

- Provides protection and comfort
- Windows can be opened, and pivoted, as desired for airflow and exterior access
- Strong, durable structural web injection-molded shell
- Profile tubing and plastic design create sealed perimeter
- Lightweight, strong & durable polyethylene construction
- Textured finish on polyethylene matches vehicle finish
- Door is backed with sound-absorbing insulation material
- Required, Sold Separately: Cab Frame Kit (PN 2880203) for use on GEM® eM™ 1400



CANVAS CAB POLY WINDSHIELD



Part # 2879490

\$399.99 US
\$476.99 CAN

FITMENT: M1400, eM1400 (Requires Cab Frame Kit PN 2880203)

- Installs quickly & easily, without tools, using Lock & Ride® technology
- Strong, durable polycarbonate construction
- Provides the best impact, scratch and chip resistance
- Full exterior gasket for sealed installation
- Radiused design for automotive fit, improved acoustics

LOCK & RIDE® HALF WINDSHIELD



Part # 2878757

\$149.99 US
\$178.99 CAN

FITMENT: M1400

- Durable, polycarbonate half windshield installs quickly & easily without tools
- Lock & Ride® clamps lock onto the vehicle frame to hold the windshield securely in place
- Provides a combination of protection and ventilation options
- Open space above windshield promotes airflow into seating area

GLASS WINDSHIELD



Part # 2880885

\$599.99 US
\$699.99 CAN

FITMENT: eM1400

- Shatterproof, scratch-resistant, optical-grade laminate safety glass offers the best rider protection and visibility.
- Protects riders from wind, rain, vehicle spray and more.
- Required, sold separately: 2880203 cab frame kit.

GLASS LOCK & RIDE® WINDSHIELD



Part # 2879741

\$549.99 US
\$629.99 CAN

FITMENT: M1400

- Installs quickly & easily, without tools, using Lock & Ride® technology
- Features minimal perimeter framework for low-profile & full visibility
- Material: Laminate 6mm automotive safety glass that is impact-, shatter-, and scratch-resistant

LOCK & RIDE® HARD COAT POLY WINDSHIELD



Part # 2879108

\$399.99 US
\$476.99 CAN

FITMENT: eM1400, M1400

- Installs quickly & easily, without tools, using Lock & Ride® technology
- Strong, durable polycarbonate construction
- Provides the best impact, scratch and chip resistance
- Full exterior gasket for sealed installation
- Radiused design for automotive fit, improved acoustics
- Required, Sold Separately: Cab Frame Kit (PN 2880203)





MANUAL BOX LIFT



Part #2880418
- fits eM1400, eM1400 LSV

\$199.99 US
\$249.99 CAN

Part #2880999
- fit eM1400

\$149.99 US
\$179.99 CAN

FITMENT: eM1400, eM1400 LSV

- Manual latch to release bed tilt and hydraulic shock to hold bed in dump position
- All mounts are integrated into the chassis for easy installation
- Includes all hardware



TOOLBOX



Part # 2634392

\$749.99 US
\$899.99 CAN

FITMENT: eL, eL XD

- Keeps tools and equipment in a convenient and safe location
- Diamond plated tool box
- Dimensions: 47.25"x20"x19.5"
- 200 lb. carrying capacity

ELECTRIC BOX LIFT



Part # 2880145
- fits eM1400, eM1400 LSV

\$1,054.99 US
\$1,255.99 CAN

Part # 2880948
- fit eM1400

\$599.99 US
\$699.99 CAN

FITMENT: M1400

- Heavy-duty actuator raises/lowers cargo box.
- All mounts are integrated into the chassis for easy installation.
- Dump dirt, sand or mulch with the flip of a switch.
- Includes all hardware and a dash-mounted switch.

DUAL TOOL CHEST WITH TAILGATE



Part # 2634411

\$2,999.99 US
\$3,499.99 CAN

FITMENT: eL, eL XD

- Diamond plated tool chest is great for easy access storage
- Fits the length of the flat bed and doors are lockable for added security
- Features an open space, in between, for items that won't fit inside the boxes and a drop down door, on the back, to help keep items from falling off

FANS/CAB HEATERS

HEATER



Part # 2880880

\$999.99 US
\$1,149.99 CAN

FITMENT: eM1400, eM1400 LSV

- Provides fan and heat source to raise cab temperatures in electric vehicles
- Easy installation, includes heater, fan, mounting hardware, blower ducts and wiring

DUAL DASH MOUNT FANS



Part # 2412027

\$212.99 US
\$253.99 CAN

FITMENT: e2, e4, e6, e4S, e6S, eL, eL XD, eS

- Dual fans mounted on the dashboard provide air circulation for interior cooling in warmer climates
- Driver and passenger side installation options

LOCK & RIDE® CARGO BOX



Part # 2877033

\$329.99 US
\$392.99 CAN

FITMENT: eM1400, eM1400 LSV and M1400

- Keeps your tools safe and secure
- Installs quickly & easily, without tools, using Lock & Ride® technology
- Oversized hinged lid provides full, easy access to cargo
- Durable Polyethylene Construction
- Required, Sold Separately: Bed Side Kit (PN 2880070) or Box Sides (PN 2634373)

SINGLE DASH MOUNT FAN



Part # 2412024

\$123.99 US
\$147.99 CAN

FITMENT: e2, e4, e6, e4S, e6S, eL, eL XD, eS

- Single fan mounts on the dashboard to provide air circulation for interior cooling
- Driver and passenger side installation options

HEATER & DEFOGGER



Part # 2412017

\$577.99 US
\$687.99 CAN

FITMENT: e2, e4, e6, e4S, e6S, eL, eL XD, eS

- Provides windshield defogging and interior cabin heat for GEM® cars



BUMPERS

CHROME FRONT BUMPER



Part # 2634378

\$237.99 US
\$283.99 CAN

FITMENT: e2, e4, e6, e4S, e6S, eL, eL XD, eS

- Chrome finish
- Protect your vehicle from scratches and dings

CHROME REAR BUMPER



Part # 2634395

\$549.99 US
\$649.99 CAN

FITMENT: e2, e4, e6

- Chrome finish
- Protect your vehicle from scratches and dings

REAR BUMPER



Part # 2880879

\$249.99 US
\$299.99 CAN

FITMENT: eM1400, eM1400 LSV

- Heavy steel construction provides protection for rear of vehicle.

RUGGED REAR BUMPER



Part # 2634382 - fit e4, e2

\$412.99 US
\$491.99 CAN

Part # 2634428 - fit e6

\$442.99 US
\$526.99 CAN

FITMENT: e4, e2

- Protect your vehicle from scratches and dings
- Powder coated steel

RUGGED FRONT BUMPER



Part # 2634380

\$298.99 US
\$355.99 CAN

FITMENT: e2, e4, e6, e4S, e6S, eL, eL XD, eS

- The rugged bumper adds extra front protection for heavy-duty work applications
- Powder-coated steel

STEP NERF BARS



Part # 2877703-458

\$149.99 US
\$178.99 CAN

FITMENT: eM1400, eM1400 LSV, M1400

- Protect the vehicle from impacts with rocks, stumps & debris window
- Provide a step when a rider is climbing into or out of the vehicle
- Rugged tubular construction ensures long-term durability & reliability





AMBER SECURITY LIGHT BAR

Part # 2412057



\$475.00 US
\$565.48 CAN

FITMENT: e2, e4, e6, e4S, e6S, eL, eL XD, eS, eM1400, eM1400 LSV, M1400

- Easy to install light design by Code 3
- Rotating Light

BLUE SECURITY LIGHT BAR

Part # 2412058



\$475.00 US
\$565.48 CAN

FITMENT: e2, e4, e6, e4S, e6S, eL, eL XD, eS, eM1400, eM1400 LSV, M1400

- Easy to install light design by Code 3
- Rotating Light

BLUE/RED LED LIGHT BAR

Part # 2412063



\$1,337.99 US
\$1,591.99 CAN

FITMENT: e2, e4, e6, e4S, e6S, eL, eL XD, eS, eM1400, eM1400 LSV, M1400, eM1400, eM1400 LSV, M1400

- Clear lens with blue/red LEDs
- Low profile for a stealth look
- Draws 50-75% less amps than a standard mechanical security light bar

MAX BOX 12 VOLT DOME LIGHT

Part # 2412020



\$33.99 US
\$39.99 CAN

FITMENT: e2, e4, e6, e4S, e6S, eL, eL XD, eS

- Provides additional light inside your Max Box

RED SECURITY LIGHT BAR

Part # 2412059



\$475.00 US
\$565.48 CAN

FITMENT: e2, e4, e6, e4S, e6S, eL, eL XD, eS, eM1400, eM1400 LSV, M1400

- Easy to install light design by Code 3
- Rotating Light

BLUE LED LIGHT BAR

Part # 2412061



\$1,399.99 US
\$1,666.99 CAN

FITMENT: e2, e4, e6, e4S, e6S, eL, eL XD, eS, eM1400, eM1400 LSV, M1400

- Clear lens with blue LEDs
- Low profile for a stealth look
- Draws 50-75% less amps than a standard mechanical security light bar

REVERSE WARNING KIT

Part # 2879228



\$49.99 US
\$49.99 CAN

FITMENT: eM1400, eM1400 LSV, M1400

- While in reverse, a beep will sound alerting those around you that you are backing up

REVERSE BEEPER KIT

Part # 2878969



\$45.00 US
\$53.57 CAN

FITMENT: e2, e4, e6, e4S, e6S, eL, eL XD, eS

- While in reverse, a beep will sound alerting those around you that you are backing up

RED LED LIGHT BAR

Part # 2412062



\$1,952.99 US
\$2,324.99 CAN

FITMENT: e2, e4, e6, e4S, e6S, eL, eL XD, eS, eM1400, eM1400 LSV, M1400

- Clear lens with red LEDs
- Low profile for a stealth look
- Draws 50-75% less amps than a standard mechanical security light bar

AMBER LED LIGHT BAR

Part # 2412060



\$1,340.99 US
\$1,595.99 CAN

FITMENT: e2, e4, e6, e4S, e6S, eL, eL XD, eS, eM1400, eM1400 LSV, M1400

- Clear lens with amber colored LEDs
- Low profile for a stealth look
- Draws 50-75% less amps than a standard mechanical security light bar





BEACON LIGHT



Part # 2880912
\$179.99 US
\$214.99 CAN

FITMENT: eM1400, eM1400 LSV, M1400

- Great for industrial applications
- Amber colored roof mounted beacon light adds visibility to the vehicle for safer operation
- All wiring and hardware is included
- Required, Sold Separately: Poly Roof Kit (PN 2879109)

AMBER BEACON LIGHT



Part # 2878928
\$145.00 US
\$172.62 CAN

FITMENT: e2, e4, e6, e4S, e6S, eL, eL XD, eS

- Roof-mounted Beacon Light adds visibility for safer operation

27" DUAL ROW LIGHT BAR



Part #2879858
\$1,499.99 US
\$1,699.99 CAN

FITMENT: eM1400, eM1400 LSV, M1400

- Lights produce a total of 21,260 lumens of illumination
- Side flood lenses provide a wide lighting periphery for optimized visibility
- Required, Sold Separately: Harness (PN 2879863) Cab Frame (PN 2880203) and Poly Roof (PN 2879109)

12" LIGHT BAR



Part # 2879500
\$349.99 US
\$399.99 CAN

FITMENT: eM1400, eM1400 LSV, M1400

- 9.5-watt LEDs produce 2,100 lumens of illumination with a low electrical draw
- Required, Sold Separately: Wire Harness (PN 2879863)

REAR WINDOW INSERT



Part # 2634298 - fits e6, e6S (up to VIN 048167)
\$169.99 US
\$233.99 CAN

Part # 2634302 - fits e2, eS, eL, eL XD (VINs 042518-current)
\$199.99 US
\$237.99 CAN

Part # 2634303 - fits only e4 (e4 VINs 042519-046685)
\$196.99 US
\$234.99 CAN

Part # 2634319 - fits e4, e6, e6S (e4 VINs 46686-current) (e6, e6S VINs 048168-current)
\$196.99 US
\$234.99 CAN

Part # 2878926 - fits e2, eS, eL (up to VIN 042518)
\$187.99 US
\$223.99 CAN

Part # 2878927 - fits e4 (up to VIN 042518)
\$192.99 US
\$229.99 CAN

- Protect the interior from sun, wind and rain

CANVAS ROOF & REAR PANEL



Part # 2879350
\$299.99 US
\$357.99 CAN

FITMENT: M1400, eM1400

- Easy to install or remove for lightweight overhead and rear protection as needed
- PVC rear window provides reliable protection and visibility
- Rear panel provides protection, prevents dust swirl
- Required, Sold Separately: Cab Frame Kit (PN 2880203) for use with GEM® eM™1400

POLY REAR PANEL



Part # 2879950
\$499.99 US
\$589.99 CAN

FITMENT: M1400, eM1400, eM1400 LSV

- Installs quickly & easily, without tools, using Lock & Ride® technology
- Required, Sold Separately: Cab Frame Kit (PN 2880203) for use with GEM® eM™1400





CARPET FLOOR MATS



Part # 2634316 - fits e2, e4, e4S, eL, eL XD, eS

\$214.99 US

\$254.99 CAN

Part # 2634317 - fits e4, e4S

\$265.99 US

\$315.48 CAN

Part # 2634320 - fits e6, e6S

\$330.99 US

\$393.99 CAN

- Plush gray carpeting features GEM® logo
- Protects your floor
- Includes mounting hardware

RUBBER FLOOR MATS



REAR FLOOR MATS

Part # 5813769 - fits e4, e6, e4S, e6S

\$69.64 US

\$82.90 CAN

FRONT FLOOR MATS

Part # 5813770 - fits e2, e4, e6, e4S, e6S, eL, eL XD, eS

\$117.22 US

\$139.55 CAN

- Protects your floor from scuff marks, and provides added traction

SCUFF GUARDS



Part # 2634376 - fits e2, eL, eL XD, eS

\$99.99 US

\$118.99 CAN

Part # 2634377 - fits e6, e6S

\$400.99 US

\$477.99 CAN

Part # 2634375 - fits e4, e4S

\$143.99 US

\$170.99 CAN

- Protect the panels of your vehicle from scuff marks & scratches
- Protect all entrance points on vehicle
- Includes: 2 scuff guards
- Drilling may be required for installation

BIMINI TOP



Part # 2877852-067

\$99.99 US

\$119.99 CAN

FITMENT: M1400, eM1400

- Provides shade and protection from the weather
- Easy to attach and remove
- Stores compactly
- Required, Sold Separately: Cab Frame Kit (PN 2880203) for use with GEM® eM™ 1400

LOCK & RIDE® POLY ROOF



Part # 2879109

\$299.99 US

\$357.99 CAN

FITMENT: eM1400 LSV, M1400, eM1400

- Installs quickly and easily, without tools, using Lock & Ride® technology and provides a sealed fit
- Provides outstanding overhead protection and shade to keep riders protected and comfortable
- Lightweight, strong & durable polyethylene construction
- Textured finish on polyethylene matches vehicle finish
- Required, Sold Separately: Cab Frame Kit (PN 2880203) for use with GEM® eM™ 1400





STAKE-BACK™ KIT



Part # 2634257

\$549.99 US
\$653.99 CAN

FITMENT: eL, eL XD

- Durable support for hauling & transporting larger, bulky loads
- Easy to remove side for oversized loads

STAKE-BACK™ KIT



Part # 2634260

\$419.99 US
\$459.99 CAN

FITMENT: e4S, e6S, eS

- Durable support for hauling and transporting larger, bulky loads
- Easy to remove sides for oversized loads

LADDER RACK KIT



Part # 2634799

\$866.99 US
\$1,030.99 CAN

FITMENT: eL, eL XD

- Ideal for transporting long items such as ladders, pipe, lumber or other building and maintenance supplies
- Rated for up to 75 lbs of cargo
- Can be installed with the Fold-Down Stake-Back Kit (PN 2634373)

TRUNKBACK™



Part #2634474

\$799.99 US
\$949.99 CAN

FITMENT: e2, e4, e6

- Lockable, removable, clip-in trunk that's easy to install & remove
- Perfect for groceries or other small cargo.
- Dimensions: 33"x16"x15"
- 100 lb. carrying capacity

ENCLOSED CARGO CARRIER



Part # 2634451

\$1,599.99 US
\$1,899.99 CAN

FITMENT: e4S, e6S, eS

- Lockable, weather-tight, enclosed cargo carrier is perfect for transporting food and cargo, supplies or tools
- Features hinged supported doors and high-quality lockable door latch
- Large, 25 cu ft. storage capacity.
- Dimensions 18"x18"x48"

SHORT BED CONVERSION



Part # 2634446

\$898.99 US
\$1,070.99 CAN

FITMENT: e2, e4

- Easily convert the back of your GEM® to carry more cargo
- Payload capacity of 330 lbs when installed

FOLD DOWN STAKE-BACK™ KIT



Part # 2634373

\$1,199.99 US
\$1,399.99 CAN

FITMENT: eL, eL XD

- Durable support for hauling and transporting larger, bulky loads
- Both sides and rear fold down independently
- No tools needed, load and unload cargo with easy-to-open latches
- Can be installed with the Ladder Rack (PN 2634799)

REMOVABLE LOCK & WORK™ BED SIDES



Part # 2880070

\$499.99 US
\$599.99 CAN

FITMENT: eM1400, eM1400 LSV, M1400

- Contain your cargo with solid 12" tall sides and a removable rear panel.
- Easily removed and installed using Lock & Work™ Technology

CLIP-IN STAKE-BACK™



Part # 2634469

\$799.99 US
\$949.99 CAN

FITMENT: e2, e4, e6

- Detachable
- Dimensions: 39"x25"x12"
- 150 lb. carrying capacity

LINKSBACK™



Part # 2634464

fits e2, e4, e6 ('98-'10)

\$1,349.99 US
\$1,599.99 CAN

Part # 2634475

fits e2, e4, e6 ('11 - current)

\$1,199.99 US
\$1,399.99 CAN

- Carries two golf bags and accessories
- Two separate containers and a central basket hold other accessories
- Does not fit with: Rear bumpers

RESCUE SKID WITH SEAT



FITMENT: eL, eL XD

- Heavy-duty patient transport system
- Removable and adjustable attendant seat and seatbelt

Part # 2859972

\$3,249.99 US
\$3,899.99 CAN





2" REAR RECEIVER HITCH



Part # 1020438 - fits eL, eL XD

\$269.99 US
\$321.99 CAN

Part # 2878932 - fits e2, E4 ('99-'04)

\$329.99 US
\$379.99 CAN

Part # 2878933 - fits e4S, eS

\$299.99 US
\$349.99 CAN

Part # 2878934 - fits eL ('99-'06)

\$247.99 US
\$295.99 CAN

Part # 2878937 - fits e2, e4 ('05-'12)

\$379.99 US
\$449.99 CAN

- Rated for 1,000 lbs. tow capacity with a 100 lbs. tongue weight capacity
- Required, Sold Separately: Draw Bar Adapter (PN 2875320)

POLARIS® PRO HD 4500 LB. WINCH



Part # 2879280

\$749.99 US
\$899.99 CAN

FITMENT: M1400

- 4,500 lbs. (2041 kg) rated pull
- 1.5-hp permanent magnet motor
- Auto-Stop technology stops winch at end of pull/lift to prevent stress on drive line components & prevents over lifting of plows, over-retrieving of rope on pulls
- Near-silent free spool operation - 40% quieter
- Polished, corrosion-resistant aluminum hawse fairlead
- Corded remote control
- 50' of 6 mm premium, high-strength synthetic rope

POLARIS® 3500 LB. INTEGRATED WINCH



Part # 2878784

\$449.99 US
\$524.99 CAN

FITMENT: eM1400, eM1400 LSV

- 3,500 lbs. rated pull
- 50 feet of 7/32" high-strength steel cable
- Sealed motor and gear train to ensure reliable operation in extreme conditions
- Includes: mini-rocker corded switch, roller fairlead, hook and strap and all mounting hardware and installation wiring

CAR COVER



Part # 2685205 - fits e6

\$374.99 US
\$445.99 CAN

Part # 2685206 - fits e6S

\$336.99 US
\$400.99 CAN

Part # 2685207 - fits e4

\$264.99 US
\$315.99 CAN

Part # 2685208 - fits e2

\$254.99 US
\$302.99 CAN

Part # 2685210 - fits eL XD, eL, eS

\$221.99 US
\$263.99 CAN

- Protects your vehicle in short or long term storage
- Water-resistant, washable, and designed not to scratch the finish of your vehicle
- Features a cinch strap to ensure a tight fit





ALL SURFACE FOAM CLEANER

Part # 8560192



\$11.99 US
\$14.99 CAN

▪ Keep your GEM® clean with this all purpose cleaner

FIBERGLASS, PLASTIC, & RUBBER RESTORER

Part # 8520814



\$16.99 US
\$19.99 CAN

▪ Restores the fiberglass, plastic and rubber

WINDSHIELD CLEANER

Part # 8520813



\$9.99 US
\$11.99 CAN

▪ Streak free cleaner for windshield

POLARIS® POWER PORTABLE GENERATORS



Polaris® POWER portable digital inverter generators are built for your outdoor needs and are tested to the same rigorous standards as every Polaris® product.



1000 WATT INVERTER GENERATOR \$649.99 US
Part # P13GDGANA \$699.99 CAN

2000 WATT INVERTER GENERATOR \$999.99 US
Part # P13GDGBNA \$1,099.99 CAN

3000 WATT INVERTER GENERATOR \$1,799.99 US
Part # P13GDGCNA \$1,999.99 CAN

COVER - P1000 \$29.99 US
Part # 2686441 \$34.99 CAN

COVER - P2000 \$34.99 US
Part # 2686442 \$39.99 CAN

COVER - P3000 \$39.99 US
Part # 2686443 \$44.99 CAN



PARALLEL KIT - CETL APPROVED \$149.99 US
Part # 3410281 \$169.99 CAN



GENERATOR OIL - quart \$6.99 US
Part # 2879383 \$8.49 CAN

ENGINEERED TO MAINTAIN A LOW COST OF OWNERSHIP THAT REMAINS LESS THAN \$.02 PER MILE TO OPERATE.





Polaris® LSVs comply with the NHTSA Low Speed Vehicles rules and regulations and can be operated on many streets with posted speed limits of 35 mph or less. Check local laws regarding street use and vehicle equipment requirements. Drivers must be at least 16 years old with a valid driver's license. Driver and passengers should always wear seat belts. Where appropriate for work and riding conditions, helmets and eye protection should also be worn. Never engage in stunt driving, and avoid excessive speeds and sharp turns. Range on all Polaris® electric vehicles will vary depending on temperature, grade, payload, and driving style. All pricing, specifications, claims, and information contained in this brochure are based on information available at the time of publication. Polaris® assumes no responsibility for any inaccuracies, opinions, or omissions in those publications. All pricing, specifications, and descriptions are subject to change without notice, and Polaris® assumes no responsibility for changes in pricing or specifications. Unless otherwise noted, all trademarks are the property of Polaris Industries, Inc.

©2015 Polaris Industries Inc.

Part No. 9930098

GEMCAR.COM / 1-855-RIDE-GEM

